

BELLHOUSING ADAPTER INSTALLATION INSTRUCTIONS

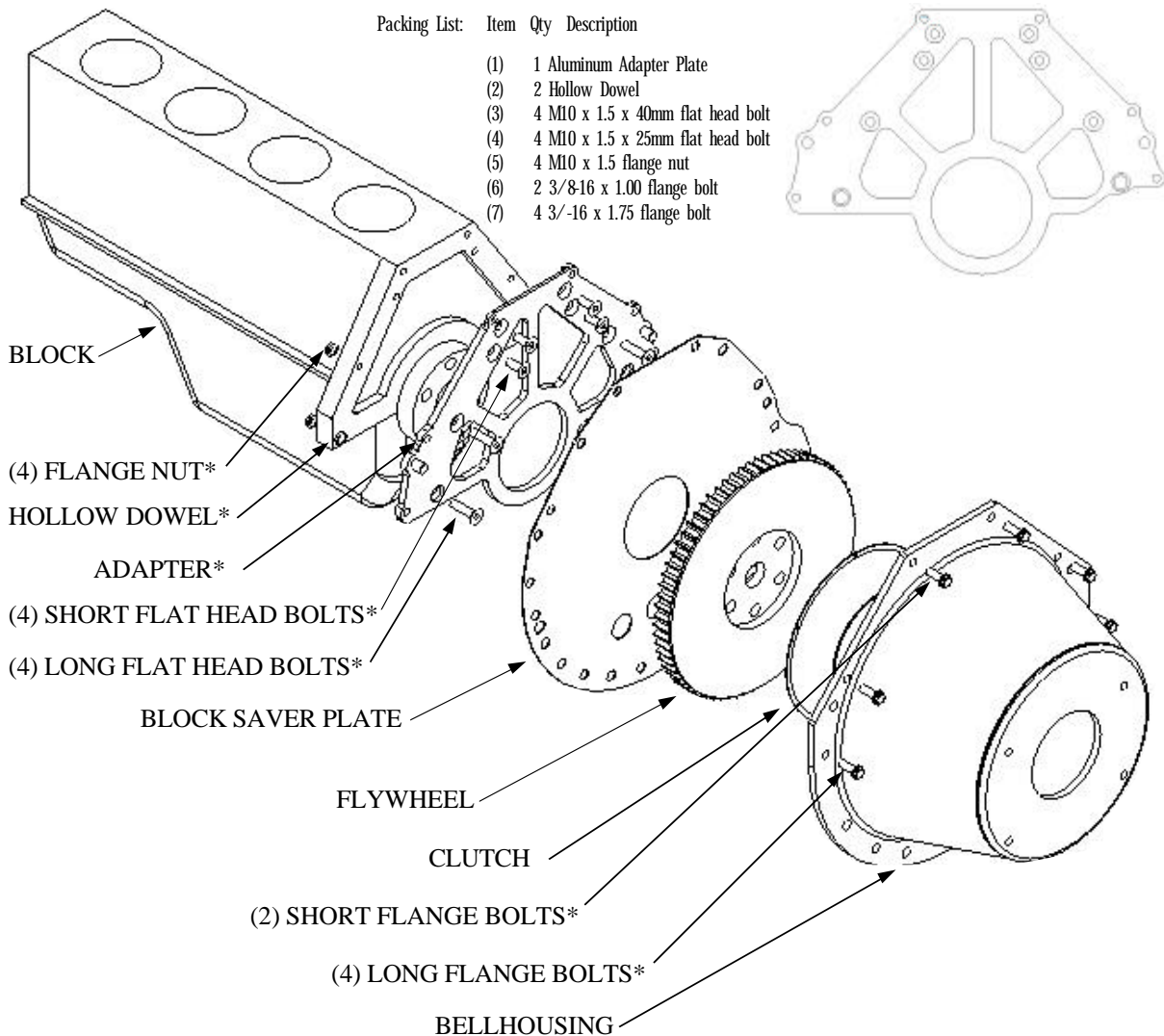
This bellhousing adapter is designed to allow the use of a smallblock Ford bellhousing on a 2.3L OHC (Pinto) four cylinder engine. It may require modification to fit other engines of the same family. Be sure to use the starter that matches the transmission/bellhousing used for the installation.

Adapter use in manual transmission applications will require the use of a zero balance smallblock Ford 157 tooth or 164 tooth flywheel (depending on bellhousing used), made with 2.3 crankshaft pilot hole and mounting holes. The block saver plate must be installed between the adapter and the bellhousing as shown below. Always check bellhousing alignment (runout) with a dial indicator after installation.

Adapter use in automatic transmission applications will require the use of a special 157 tooth or 164 tooth flexplate (depending on bellhousing used), made with 2.3 crankshaft pilot hole and mounting holes. It will also require the use of a special converter with 2.3 pilot. You will need to verify the bellhousing depth from the flexplate face to ensure proper transmission pump engagement.

The hollow dowels in the back of the 2.3L block can be shortened so that they protrude no more than 5/32" (.156"), or they can be replaced with the provided hollow dowels. The adapter will fit snugly over these dowels, so it may need to be tapped on with a soft mallet at the two hollow dowel locations. Make sure it is engaged on both dowels before attaching the flat head bolts.

The adapter attaches to the block via four short metric flat head bolts for the upper location, and four long metric flat head bolts and nuts for the lower locations. Bellhousing bolts are also included for use with an OEM 302/5.0 aluminum bellhousing. Verify thread engagement on the upper bolts into the adapter, as the threads are thin in this area. Some grinding of the bolt length may be necessary, depending on bellhousing choice.



* DENOTES ITEMS INCLUDED IN KIT